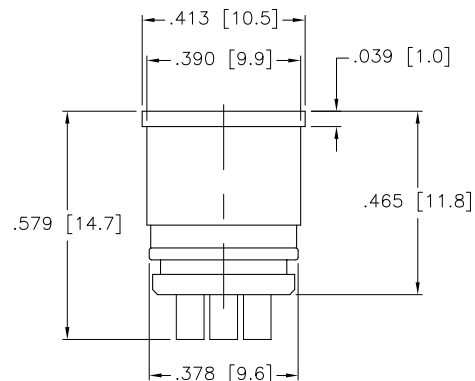
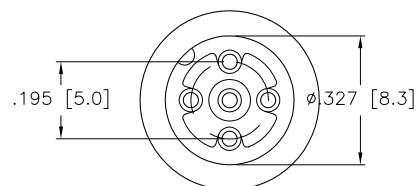
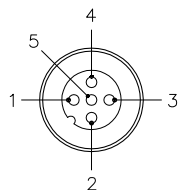
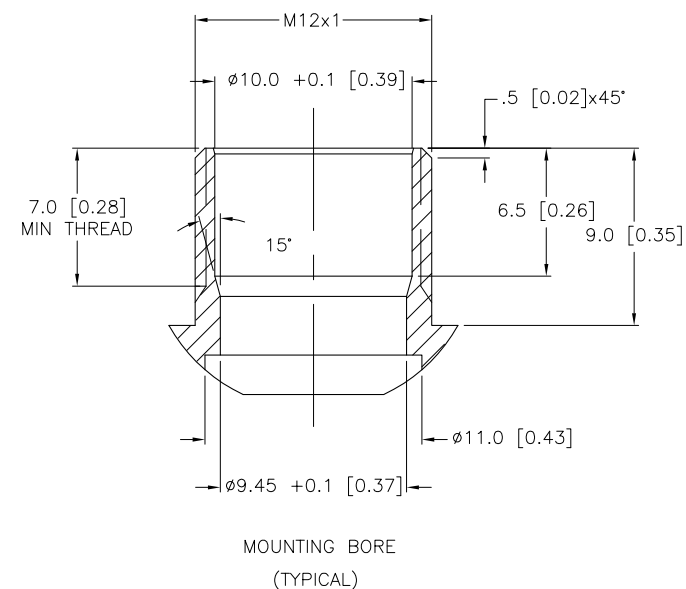


# MALE END VIEW



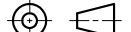
# SPECIFICATIONS

CONTACT CARRIER MATERIAL	NYLON OR TPU
CONTACT MATERIAL/PLATING	BRASS/GOLD
RATED CURRENT [A]	4.0 A
RATED VOLTAGE [V]	250 V
SOLDER CUPS	20 AWG MAX
TEMPERATURE RATING	-30°C to +80°C (-22°F to +176°F)



MOUNTING BORE  
(TYPICAL)

SOURCE DRAWING - FOR REFERENCE ONLY

RELATED DOCUMENTS		3RD ANGLE PROJECTION		THIS DRAWING IS CONFIDENTIAL AND THE PROPERTY OF TURCK INC. USE OF THIS DOCUMENT WITHOUT WRITTEN PERMISSION IS PROHIBITED.		<b>TURCK INC</b> High Technology Sensors and Automation Controls		3000 CAMPUS DRIVE MINNEAPOLIS, MN 55441 1-800-544-7769 (763) 553-7300 (763) 553-0708 fax turck.com					
1.				DRFT		IK		DATE 10/27/98		DESCRIPTION  EWAS 4.5 (10/BAG)			
2.				APVD				SCALE 1=1					
3.		ALL DIMENSIONS DISPLAYED ON THIS DRAWING ARE FOR REFERENCE ONLY		UNIT OF MEASUREMENT						IDENTIFICATION NO.  A3031-0		REV  C	
4.				INCH [ MILLIMETER ]									
				CONTACT TURCK FOR MORE INFORMATION		DO NOT SCALE THIS DRAWING						FILE: A3031-0	
MATERIAL													
SEE SPECIFICATIONS													
FINISH													
SEE SPECIFICATIONS													